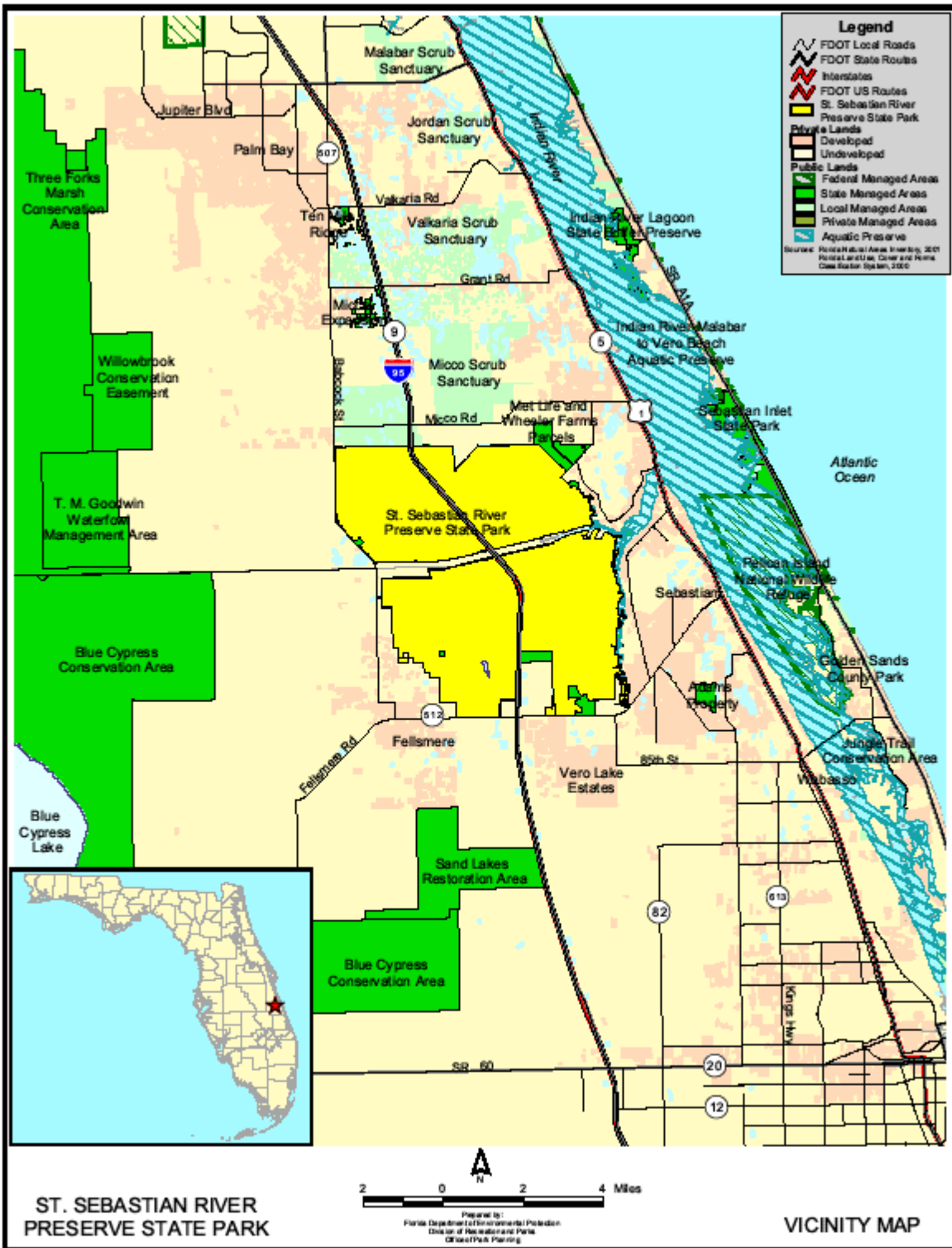
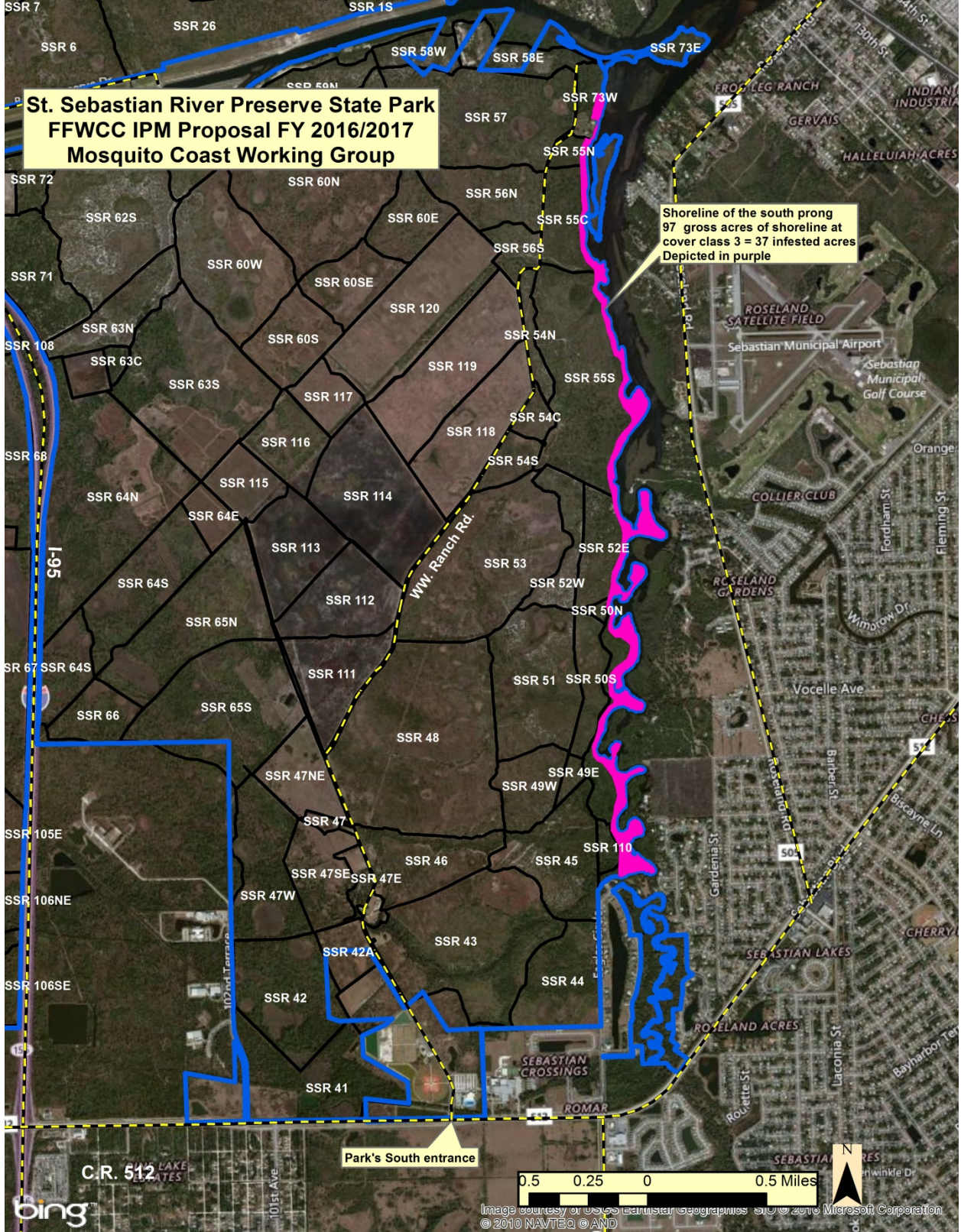


The St. Sebastian River Preserve State Park has received a grant from the Florida Department of Environmental Protection for eradication of Category I and II invasive exotic plants along the entire west shore of the South Prong of the St. Sebastian River. Those plants to be removed include Brazilian Pepper (*Schinus terebinthifolius*), Old World Climbing Fern (*Lygodium microphyllum*), Japanese Climbing Fern (*Lygodium japonicum*), Taro (*Colocasia esculenta*), Rosary Pea (*Abrus precatorius*), Senegal Date Palm (*Phoenix reclinata*), Common Bamboo (*Bambusa vulgaris*), Cogon Grass (*Imperata cylindrica*), Chinese Tallow (*Sapium sebiferum*), Strawberry guava (*Psidium cattleianum*), Common Guava (*Psidium guajava*), Surinam Cherry (*Eugenia uniflora*), Torpedo Grass (*Panicum repens*), Guinea grass (*Megathyrus maximus*), Juargua grass (*Hyparrhenia rufa*), and Natal grass (*Melinis repens*).

The work is expected to begin late fall 2016 and be completed by the beginning of summer 2017. The maps below indicate where the work is to be conducted.





**St. Sebastian River Preserve State Park
FFWCC IPM Proposal FY 2016/2017
Mosquito Coast Working Group**

Shoreline of the south prong
97 gross acres of shoreline at
cover class 3 = 37 infested acres
Depicted in purple

Park's South entrance

0.5 0.25 0 0.5 Miles



Image courtesy of USGS Earthstar Geographics, Inc. © 2010 Microsoft Corporation
© 2010 NAVTEQ © AND

**St. Sebastian River Preserve State Park
Potential Invasive Plant Contractor Proposal
Fischer Tract Year 2016-2017**

